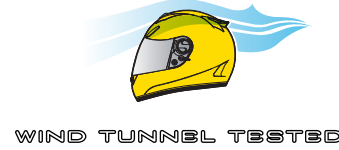
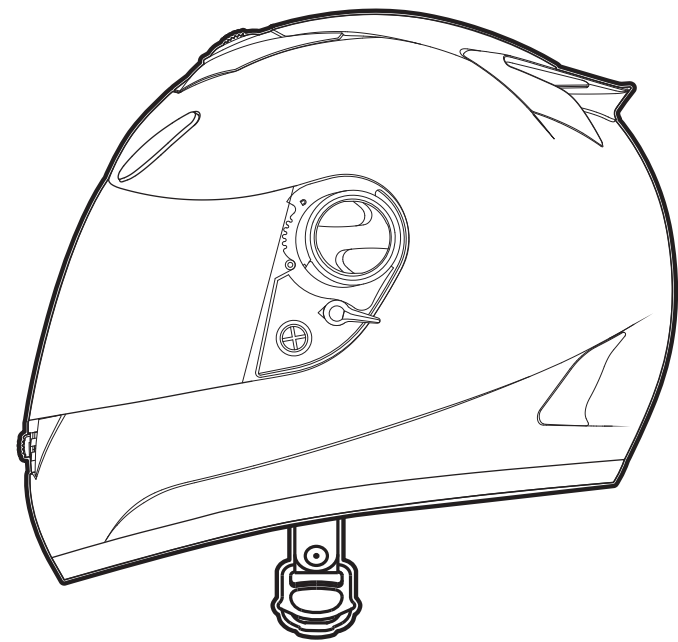


INTRODUCTION

Congratulations for acquiring a premium ScorpionExo™ helmet. This helmet embodies the latest, state-of-the-art design, engineering and technology available in the market today and is an excellent investment for your comfort and protection.

Please remember that no helmet can protect you against all possible or foreseeable impacts even when built with the latest and best materials and technology.

The following information will help you to enjoy and properly care for your helmet.



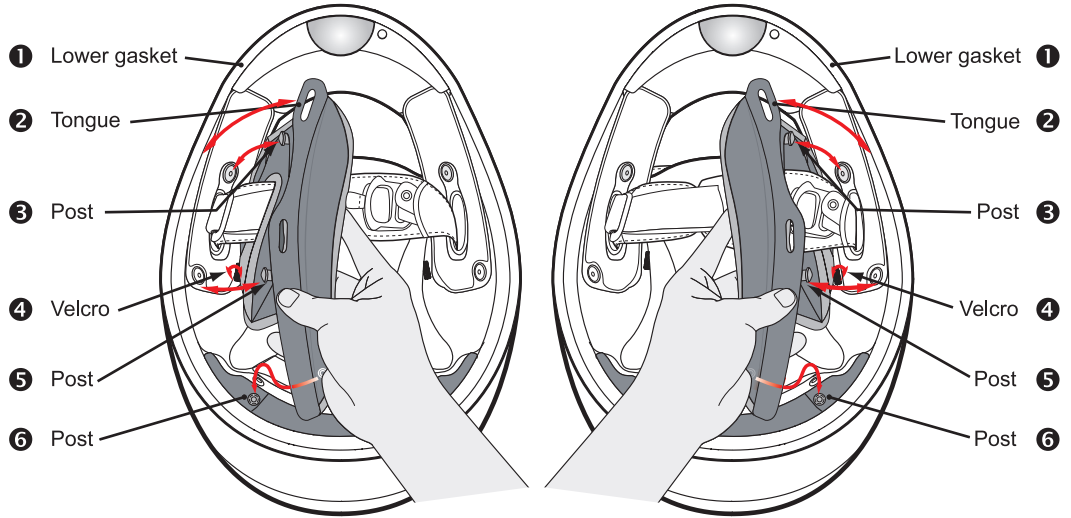
EXO-750

Quiet, aero-tuned design for wind-tunnel tested comfort. EPS-lined chin bar for additional protection.

ENGLISH 1

REMOVING THE CHEEK PADS

After removing the Chin Skirt, continue on with the cheek pads. Begin with Post ③, ⑤, ⑥ then with ④, after that you can pull away the tongue ② from the lower gasket ①.



To reinstall cheekpad, post ② in the lower gasket ①, then put the posts ③, ⑤ and ⑥ into the snaps until locked in place.

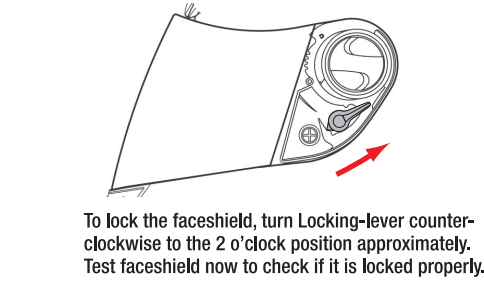
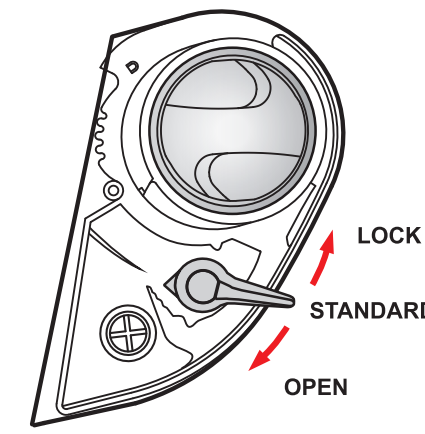
WARNING: BE SURE THAT THE CHEEK PADS ARE SECURELY INSTALLED BEFORE USE!

ENGLISH 3

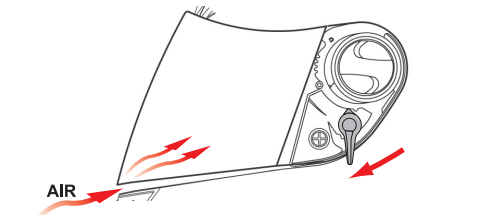
RATCHET MECHANISM

FACESHIELD LOCKING MECHANISM

NOTE: FIRST, CLOSE SHIELD TO THE LOWEST POSITION TO LOCK/UNLOCK.



To lock the faceshield, turn Locking-lever counter-clockwise to the 2 o'clock position approximately. Test faceshield now to check if it is locked properly.



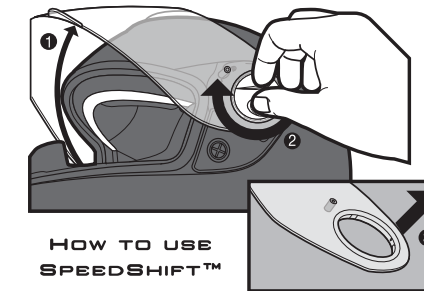
To unlock the faceshield, turn Locking-lever clockwise to the 10 o'clock position until it unlocks. Test faceshield now to check if it is unlocked properly.

ENGLISH 5

FACESHIELD REPLACEMENT

NOTE: THE FACESHIELD CAN ONLY BE REMOVED OR INSTALLED WHEN IN THE FULLY OPENED POSITION!

To remove your faceshield, place the helmet in front of you with the eyepoint facing away ①, ratchet the faceshield up to the fully open position. Rotate both circular SpeedShift™ clockwise ②. The shield will release immediately from the SpeedShift™. Then simply pull or "peel" the shield off the helmet ③.



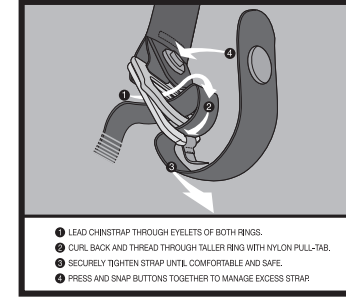
To install a faceshield on the EXO-750, center the shield's pivot holes over the SpeedShift™ pivot ratchets in the open position (up) place shield screw top inside edge from black ratchet system plate and press squarely inward, using your fingertips of the palm of your hand. Open and close the shield fully to test its secure installation before riding.

ENGLISH 7

SECURING AND WEARING YOUR HELMET

Do not simply pull your helmet down onto your head like a hat. Your ScorpionExo™ helmet should be worn as follows: Using both hands, grab the helmet's bottom rim while holding the chin straps with your thumbs, then "roll" the helmet onto your head starting at the forehead. Continue rolling the helmet on toward the back of the head until it comes to rest with your head fully in contact with the inner linings and cheek pads.

HOW TO USE CHINSTRAP



FIRMLY AND SECURELY FASTEN YOUR CHINSTRAP. Check your chinstrap for tightness occasionally as vibration or wind may loosen it.

ENGLISH 8

- ① **KWIKWICK™ MOISTURE WICKING BREATHABLE HELMET LINER AND CHEEK PADS**
Cool and dry in warm weather, warm in cool weather. Easily removable and washable.
- ② **EVERCLEAR™ NO FOG FACESHIELD**
Optically-correct clear shield with state-of-the-art fog-free technology. Anti-Scratch hardened coating.
- ③ **SPEEDSHIFT™ QUICK CHANGE SHIELD SYSTEM**
Easy, secure, faceshield changes in a few seconds.
- ④ **AERO TUNED REAR SPOILER**
Reduces lift, creates vacuum to maximize airflow through helmet.
- ⑤ **VENTILATION SYSTEM**
Adjustable, indexed front and rear vents for max airflow in summer, max warmth in winter.
- ⑥ **AIRFIT CONCEPT™**
Cheekpad AirPump™ adjustment system.
- ⑦ **FACESHIELD LOCKING MECHANISM**
Shield securely locks in place.

EXO-750
FIBERGLASS/KEVLAR™ MATRIX SHELL

CERTIFIED ECE R22-05
The European safety standard.

2 ENGLISH

REMOVING THE CROWN LINER

After removing the cheek pads, reach into the helmet and pull out the Crown-liner shown below. It is attached by a liner frame. Pull the liner plate from liner frame so as to separate.

USING THE AIRFIT™ FEATURE FOR CUSTOMIZED FIT

There are internal air bladders in the left and right sides of the helmet, which inflate by repeatedly depressing the Airfit™ located in the front (mouth area) of the helmet.

FIT

It is important for maximum safety that your ScorpionExo™ helmet fit snugly and comfortably on your head with the retention strap (chinstrap) properly fastened. If the helmet moves side-to-side or forward and backward without pulling the facial skin and scalp, it is too large. If the helmet is constricting or painful, it is too small.

VENTILATION SYSTEMS

Ventilation systems are designed and engineered to maximize your comfort in a wide range of temperatures. Familiarize yourself with the vents on your street helmet. Some vents have detents allowing partial opening and closing, thereby controlling intake and exhaust airflow. Your helmet ventilation systems should be kept clear of any obstructions including dirt, insects or other items which could interfere with proper flow of air. The ventilation systems play an important role, especially during physical exertion or hot-weather riding.

FACESHIELDS

The faceshield on your ScorpionExo™ helmet provides protection from weather, small flying objects and wind (exceeds VESC-8). Tinted shields are available to protect your eyes from excessive sunlight. The exclusive, patent-pending ScorpionExo™ "Speedshift™" quick-change faceshield system allows you to easily change your shield in less than 10 seconds.

To deflate the air bladders, hold down the button to the side of the pump. The air will slowly release in a few seconds.

Though the inflation / deflation system of this helmet is designed to be used when you are actively wearing your EXO-750, DO NOT ATTEMPT TO ADJUST THE FIT WHILE RIDING.

Do not modify, puncture, or damage the air bladders in any way. If the air bladders, or any other part of the inflation / deflation system becomes damaged or faulty, please consult with your dealer or directly with Scorpion Sports Europe for parts warranty coverage details.

4 ENGLISH

FUNCTION

A helmet's main function is to protect your head from impact in case of an accident. To accomplish this, a helmet surrounds your head with a matrix of materials designed to absorb and cushion impact energy. A helmet is also designed to provide you with comfort while riding at speed and in various weather conditions. Yet, there is a trade-off: A helmet decreases hearing sensitivity, peripheral vision and physical movement to a certain extent while providing protection and comfort.

FIT

It is important for maximum safety that your ScorpionExo™ helmet fit snugly and comfortably on your head with the retention strap (chinstrap) properly fastened. If the helmet moves side-to-side or forward and backward without pulling the facial skin and scalp, it is too large. If the helmet is constricting or painful, it is too small.

VENTILATION SYSTEMS

Ventilation systems are designed and engineered to maximize your comfort in a wide range of temperatures. Familiarize yourself with the vents on your street helmet. Some vents have detents allowing partial opening and closing, thereby controlling intake and exhaust airflow. Your helmet ventilation systems should be kept clear of any obstructions including dirt, insects or other items which could interfere with proper flow of air. The ventilation systems play an important role, especially during physical exertion or hot-weather riding.

FACESHIELDS

The faceshield on your ScorpionExo™ helmet provides protection from weather, small flying objects and wind (exceeds VESC-8). Tinted shields are available to protect your eyes from excessive sunlight. The exclusive, patent-pending ScorpionExo™ "Speedshift™" quick-change faceshield system allows you to easily change your shield in less than 10 seconds.

NEVER WEAR A FACESHIELD THAT HAS BECOME SCRATCHED, OR RIDE WITH A FACESHIELD THAT IS FOGGED BY CONDENSATION. SCORPIONEXO™ FACESHIELDS (CLEAR AND SMOKE ONLY) COME WITH A SPECIAL EVERCLEAR™ SCRATCH-AND FOG-RESISTANT COATING. THIS COATING MAY LOSE ITS EFFECTIVENESS AFTER APPROXIMATELY TWO YEARS OF USE. THEREFORE, FOR MAXIMUM SAFETY AND VISIBILITY, WE RECOMMEND YOU REPLACE YOUR SCORPION-EXO FACESHIELD WITH A NEW, GENUINE SCORPIONEXO™ FACESHIELD AT LEAST EVERY TWO YEARS.

6 ENGLISH

CLEANING YOUR SCORPIONEXO™ HELMET SYSTEM

None of the components of your ScorpionExo™ helmet can be damaged by water. All headliners and sweat-wicking cheek pads are machine washable. Wash them with a mild detergent in warm water and allow to air dry. Hand washing is recommended, but machine washing is also permitted. Use the "delicate" cycle to prevent the agitator from damaging the sweat-wicking material covering the liner parts. Do not place lining parts in the dryer. Excess heat may damage the foam and coverings. The faceshield may be cleaned with plastic polish or mild soap and water. The shell of your helmet should be cleaned using only a mild detergent and water. NEVER USE PETROLEUM BASED CHEMICALS, SOLVENTS, GASOLINE, CLEANING AGENTS OR ADHESIVES to clean the shell, liners or faceshield of your helmet. Your helmet shell, liner and faceshield may be seriously damaged by the use of such products. A coat of automotive wax over the outer shell will provide added shine and a protective layer for the finish.

DON'T

DON'T ride without fastening your chinstrap.
DON'T clean your helmet with petroleum products, solvents, benzene, thinner or cleaning agents.
DON'T paint over your helmet's finish.
DON'T drop your helmet from any height onto a hard surface. This could cause damage to your helmet's finish and/or decrease its ability to protect you.

DON'T place your helmet on your motorcycle's rearview mirror: The sharp pressure from the mirror's edge will compress and damage the helmet's shock-absorbing liner.
DON'T place your helmet on the motorcycle's seat or fuel tank. It can easily roll off and hit the ground causing damage to the helmet. It is best to place your helmet on the ground so it cannot fall in any direction.
DON'T ride with a scratched faceshield. This can impair your vision, especially at night.
DON'T modify any part of your helmet, e.g., drilling the shell or cutting and pressing the shock absorbing liner. Installation of sound systems, speakers and microphones reduces your helmet's ability to protect you and is not recommended.
DON'T use the helmet again if it has either been dropped or involved in an accident. Replace it even if damage is not visible to the naked eye.
DON'T wear a dark or tinted faceshield in dark or poor visibility riding conditions.
DON'T place your headliners and cheek pads in the dryer after washing. Allow them to air dry.
DON'T attempt to remove, change or replace your faceshield while riding your motorcycle or ATV.

WARRANTY

All ScorpionExo™ helmets are guaranteed for 3 years (2 years for Anti-Fog coating from faceshield) warranty from the date of purchase. For on-line registration of your new ScorpionExo™ helmet, please log onto www.scorpionsports.eu and click on "Support."
Should you have a warranty claim, please call Scorpion Sports Europe at +33-(0)390222299 during business hours and ask for the warranty department. You may also take your helmet to your local dealer for evaluation.

8 ENGLISH