



INTRODUCTION

Congratulations for acquiring a premium ScorpionExo™ helmet. This helmet embodies the latest, state-of-the-art design, engineering and technology available in the market today and is an excellent investment for your comfort and protection.

Please remember that no helmet can protect you against all possible or foreseeable impacts even when built with the latest and best materials and technology.

The following information will help you to enjoy and properly care for your helmet.

FUNCTION

A helmet's main function is to protect your head from impact in case of an accident. To accomplish this, a helmet surrounds your head with a matrix of materials designed to absorb and cushion impact energy. A helmet is also designed to provide you with comfort while riding at speed and in various weather conditions. Yet, there is a trade-off: A helmet decreases hearing sensitivity, peripheral vision and physical movement to a certain extent while providing protection and comfort.

FIT

It is important for maximum safety that your ScorpionExo™ helmet fit snugly and comfortably on your head with the retention strap (chinstrap) properly fastened. If the helmet moves side-to-side or forward and backward without pulling the facial skin and scalp, it is too large. If the helmet is constricting or painful, it is too small.

FACESHIELDS

The faceshield on your ScorpionExo™ helmet provides protection from weather, small flying objects and wind. Tinted shields are available to protect your eyes from excessive sunlight. The exclusive, patent-pending ScorpionExo™ "SpeedShift™" quick-change faceshield system allows you to easily change your shield in less than 10 seconds. See the instructions below.

NEVER WEAR A DARK OR TINTED FACESHIELD IN DARK OR POOR VISIBILITY RIDING CONDITIONS. This is not only unsafe, but also illegal in most states.

NEVER WEAR A FACESHIELD THAT HAS BECOME SCRATCHED, OR RIDE WITH A FACESHIELD THAT IS FOGGED BY CONDENSATION. SCORPIONEXO FACESHIELDS (CLEAR AND SMOKE ONLY) COME WITH A SPECIAL SCRATCH RESISTANT COATING.

VENTILATION SYSTEMS

Ventilation systems are designed and engineered to maximize your comfort in a wide range of temperatures. Familiarize yourself with the vents on your street helmet. Some vents have detents allowing partial opening and closing, thereby controlling intake and exhaust airflow. Your helmet ventilation systems should be kept clear of any obstructions including dirt, insects or other items which could interfere with proper flow of air. The ventilation systems play an important role, especially during physical exertion or hot-weather riding.

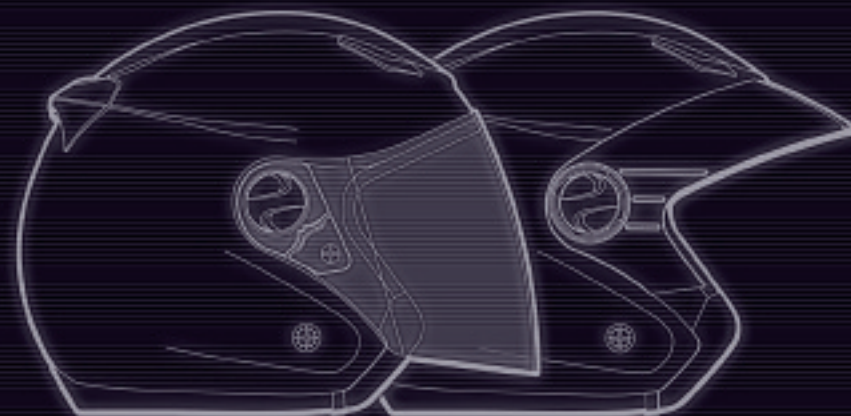


**SCORPION
SPORTS, INC.**

25921 Atlantic Ocean Drive
Lake Forest, CA 92630

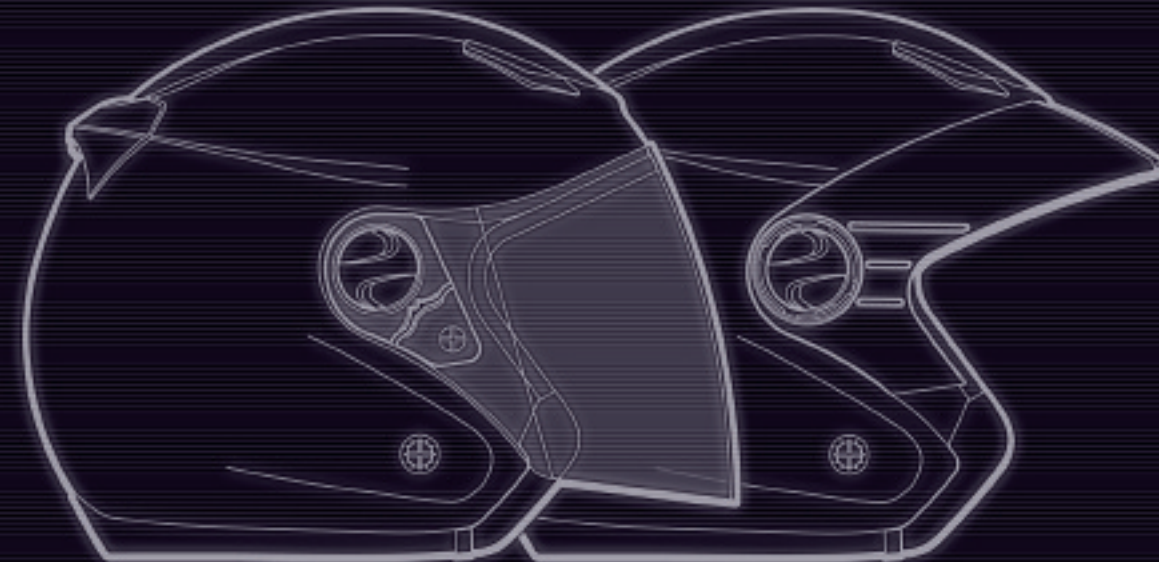
888-6SCORPION (888-672-6774)

scorpionusa.com



HELMET TECHNICAL MANUAL

Read before wearing your ScorpionExo Helmet.

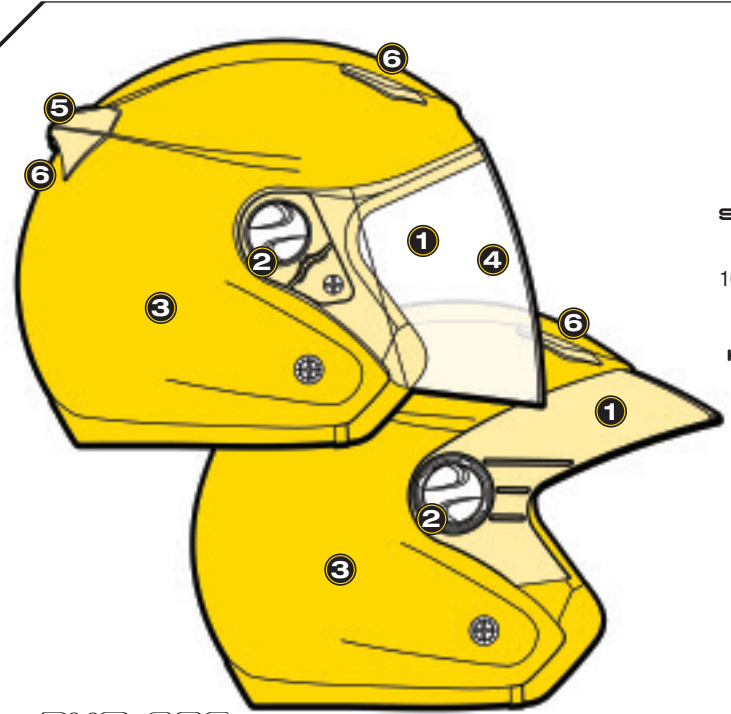


EXO-200

ScorpionExo, SpeedShift, EverClear, KwikWick, RaceCase, Nikki Sloan, her likeness and the ScorpionExo logos are trademarks of Scorpion Sports, Inc. ©2005 Scorpion Sports, Inc. Printed in China.

SCORPION EXO HELMETS

SCORPION EXO HELMETS



EXO-200
EXO-200

ADVANCED COMPOSITE ENGINEERED SHELL
Aero-tuned design for quiet comfort.

HELMET FEATURES

FACESHIELD AND SUN VISOR ①
Both are included.

SPEEDSHIFT™ QUICK-CHANGE SHIELD/VISOR SYSTEM ②
Easy, secure, tool-less faceshield changes in 10 seconds or less (patent pending). Swapping shield for sun visor is quick and easy too.

KWIKWICK™ MOISTURE-WICKING BREATHABLE HELMET LINER AND CHEEK PADS ③
Cool and dry in warm weather, warm in cool weather. Easily removable and washable.

AERO-TUNED FACESHIELD ④
Optically-correct clear shield with downdraft leading edge for quieter performance. Anti-scratch hardened coating.

AERO-TUNED REAR SPOILER ⑤
Reduces lift, creates vacuum to maximize airflow through helmet.

VENTILATION SYSTEM ⑥
Adjustable, indexed front and rear vents for max airflow in summer, max warmth in winter.

DOT CERTIFIED
Street legal in every state.

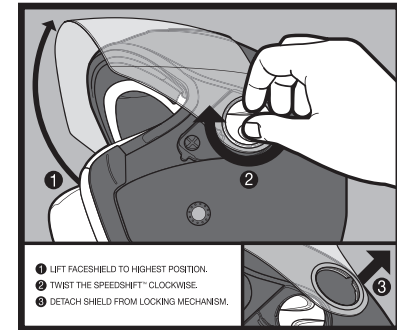
SUN VISOR INSTALLATION AND FACESHIELD REPLACEMENT

NOTE: THE FACESHIELD CAN ONLY BE REMOVED OR INSTALLED WHEN IN THE FULLY OPENED POSITION!!!

To remove your faceshield, place the helmet in front of you with the eye port facing away. Ratchet the faceshield up to the fully open position. Using both hands, rotate both circular SpeedShifters™ clockwise; because they are on opposite sides of the helmet, it will feel like you are twisting them in opposite directions. The shield will release immediately from the SpeedShifters: Then simply pull or “peel” the shield off the helmet.

To install a shield or the EXO-200 sun visor, center the shield’s pivot holes over the SpeedShifter™ pivot ratchets in the open position (up) and press squarely inward, using your fingertips or the palm of your hand. Open and close the shield fully to test its secure installation before riding.

HOW TO USE SPEEDSHIFT™

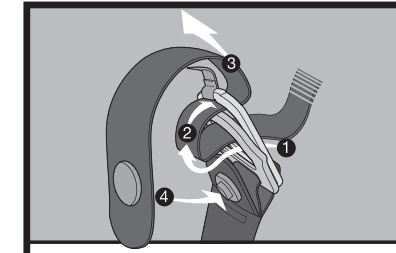


SECURING AND WEARING YOUR HELMET

Do not simply pull your helmet down onto your head like a hat. Your ScorpionExo™ helmet should be worn as follows: Using both hands, grab the helmet’s bottom rim while holding the chin straps with your thumbs, then “roll” the helmet onto your head starting at the forehead.

Continue rolling the helmet on toward the back of the head until it comes to rest with your head fully in contact with the inner linings and cheek pads. Finally, **FIRMLY AND SECURELY FASTEN YOUR CHINSTRAP.** Check your chinstrap for tightness occasionally as vibration or wind may loosen it.

HOW TO USE CHINSTRAP



CLEANING YOUR SCORPIONEXO™ HELMET SYSTEM

None of the components of your ScorpionExo™ helmet can be damaged by water. All headliners and sweat-wicking cheek pads are machine washable. Wash them with a mild detergent in warm water and allow to air dry. Hand washing is recommended, but machine washing is also permitted. Use the “delicate” cycle to prevent the agitator from damaging the

sweat-wicking material covering the liner parts. Do not place lining parts in the dryer: Excess heat may damage the foam and coverings. The faceshield may be cleaned with plastic polish or mild soap and water. The shell of your helmet should be cleaned using only a mild detergent and water. **NEVER USE PETROLEUM BASED CHEMICALS, SOLVENTS, GASOLINE, CLEANING AGENTS OR ADHESIVES** to clean the shell, liners or faceshield of your helmet. Your helmet shell, liner and faceshield may be seriously damaged by the use of such products. A coat of automotive wax over the outer shell (except matte finishes) will provide added shine and a protective layer for the finish.

DONT'S

- DON'T** ride without fastening your chinstrap.
- DON'T** clean your helmet with petroleum products, solvents, benzene, thinner or cleaning agents.
- DON'T** paint over your helmet's finish without totally protecting and isolating the shock-absorbing liner and plastic parts. Your warranty will otherwise be invalidated.
- DON'T** drop your helmet from any height onto a hard surface. This could cause damage to your helmet's finish and/or decrease its ability to protect you.
- DON'T** place your helmet on your motorcycle's rearview mirror: The sharp pressure from the mirror's edge will compress and damage the helmet's shock-absorbing liner.
- DON'T** place your helmet on the motorcycle's seat or fuel tank. It can easily roll off and hit the ground causing damage to the helmet. It is best to place your helmet on the ground so it cannot fall in any direction.

- DON'T** ride with a scratched faceshield. This can impair your vision, especially at night.
- DON'T** modify any part of your helmet, e.g., drilling the shell or cutting and pressing the shock absorbing liner. Installation of sound systems, speakers and microphones reduces your helmet's ability to protect you and is not recommended.
- DON'T** use the helmet again if it has either been dropped or involved in an accident. Replace it even if damage is not visible to the naked eye.
- DON'T** wear a dark or tinted faceshield in dark or poor visibility riding conditions.
- DON'T** place your headliners and cheek pads in the dryer after washing. Allow them to air dry.
- DON'T** attempt to remove, change or replace your faceshield while riding your motorcycle or ATV.
- DON'T** use paint which requires heat curing.

WARRANTY

For on-line registration of your new ScorpionExo™ helmet, please log onto www.scorpionusa.com and click on “Warranty Registration.” Should you have a warranty claim, please call 888-672-6774 during business hours (Pacific Standard Time) and ask for the warranty department. You may also take your helmet to your local dealer for evaluation. For minor cosmetic defects, the dealer may be able to help you with an assortment of spare parts or accessories. Spare parts and accessories are also available directly ScorpionExo™ on our website if your dealer does not have the ones you need.