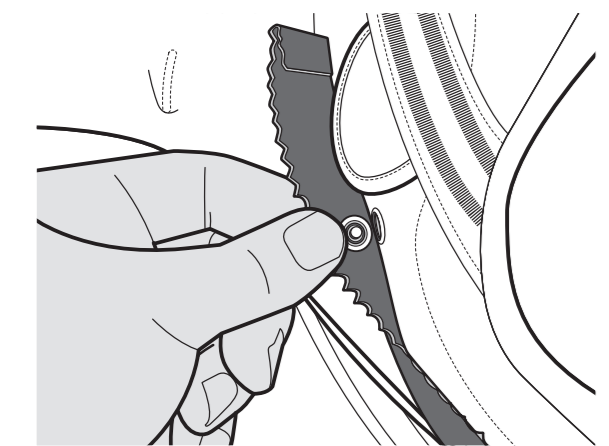
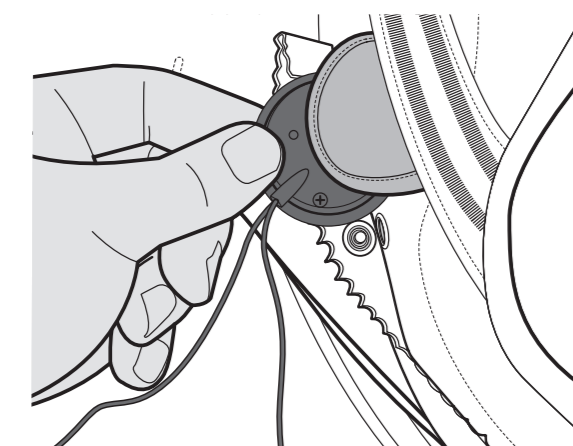


INSTALLING COMMUNICATIONS

With helmet still in the upside-down position, and with the chinstrap undone, slip the arms of your chinstrap out of the harness of the Neck-liner. Unbutton the first snap to expose the speaker pouch for your communications device.



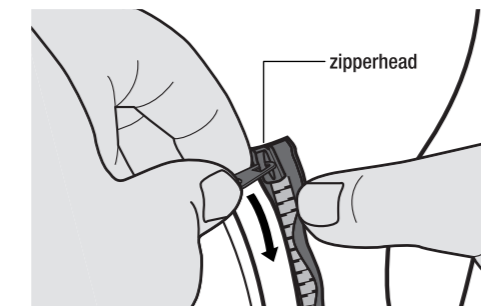
Place the left and right speakers inside the pouches, which are positioned over the area of the ears when the helmet is worn. Lead the excess wire towards the back, tucking the wire into buttoned flap. Lastly, button up the flap-closure to keep your speakers from slipping out of their pouches.



NOTE: COMMUNICATIONS DEVICE IS NOT INCLUDED WITH YOUR SCORPION HELMET, BUT IS SUITED TO ACCOMMODATE MANY AVAILABLE MODELS.

REMOVING THE KWIKWICK™ LINERS

UNZIPPING THE REMOVABLE NECK-LINER

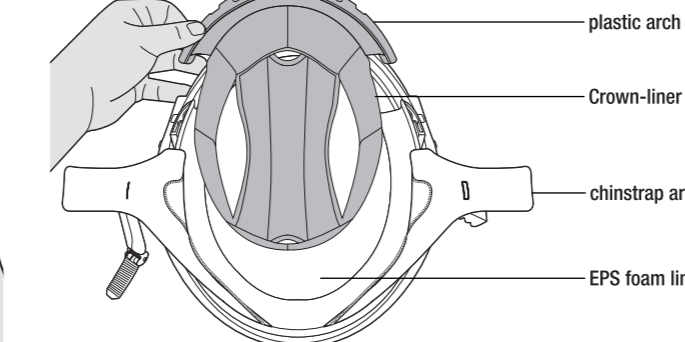
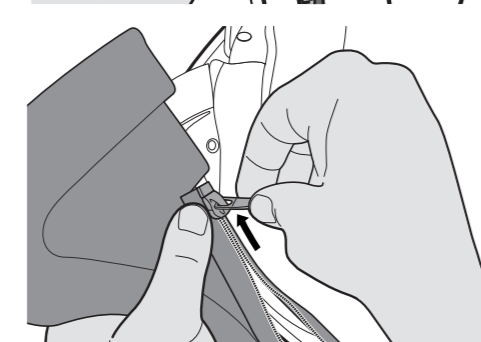


First, your helmet should be positioned upside-down with the front facing away from you, and on a soft, supportive surface that will not damage your helmet's finish or structural integrity.

The arms of the chinstrap should also be out of the Neck-liner harness.

Locate the zipperhead inside the left-hand side of the helmet (on the same side as the red chinstrap locking-mechanism), and unzip it throughout the back of the helmet. Unfasten velcro tabs in temple-area of Neck-liner.

Detach the Neck-liner completely from the zipper, and set it aside.



With your Neck-liner removed now, the Crown-liner can be lifted out of the center of the helmet. Pull out the plastic arch from the bracket, embedded in the front of the EPS foam liner of the helmet interior.

CLEANING YOUR SCORPIONEXO™ HELMET SYSTEM

None of the components of your ScorpionExo™ helmet can be damaged by water. All headliners and sweat-wicking cheek pads are machine washable. Wash them with a mild detergent in warm water and allow to air dry. Hand washing is recommended, but machine washing is also permitted. Use the "delicate" cycle to prevent the agitator from damaging the sweat-wicking material covering the liner parts. Do not place lining parts in the dryer. Excess heat may damage the foam and coverings. The faceshield may be cleaned with plastic polish or mild soap and water. The shell of your helmet should be cleaned using only a mild detergent and water. NEVER USE PETROLEUM BASED CHEMICALS, SOLVENTS, GASOLINE, CLEANING AGENTS OR ADHESIVES to clean the shell, liners or faceshield of your helmet. Your helmet shell, liner and faceshield may be seriously damaged by the use of such products. A coat of automotive wax over the outer shell (except matte finishes) will provide added shine and a protective layer for the finish.

DON'T'S

- DON'T ride without fastening your chinstrap.
- DON'T clean your helmet with petroleum products, solvents, benzene, thinner or cleaning agents.
- DON'T paint over your helmet's finish without totally protecting and isolating the shock-absorbing liner and plastic parts. Your warranty will otherwise be invalidated.
- DON'T drop your helmet from any height onto a hard surface. This could cause damage to your helmet's finish and/or decrease its ability to protect you.
- DON'T place your helmet on your motorcycle's rearview mirror: The sharp pressure from the mirror's edge will compress and damage the helmet's shock-absorbing liner.
- DON'T place your helmet on the motorcycle's seat or fuel tank. It can easily roll off and hit the ground causing damage to the helmet.
- It is best to place your helmet on the ground so it cannot fall in any direction.
- DON'T ride with a scratched faceshield. This can impair your vision, especially at night.
- DON'T modify any part of your helmet, e.g., drilling the shell or cutting and pressing the shock absorbing liner. Installation of sound systems, speakers and microphones reduces your helmet's ability to protect you and is not recommended.
- DON'T use the helmet again if it has either been dropped or involved in an accident. Replace it even if the damage is not visible to the naked eye.
- DON'T wear a dark or tinted faceshield in dark or poor visibility riding conditions.
- DON'T place your headliners and cheek pads in the dryer after washing. Allow them to air dry.
- DON'T attempt to remove, change or replace your faceshield while riding your motorcycle or ATV.
- DON'T use paint which requires heat curing.

WARRANTY

For on-line registration of your new ScorpionExo™ helmet, please log on www.scorpionusa.com and click on "Warranty Registration." Should you have a warranty claim, please call 888-672-6774 during business hours (Pacific Standard Time) and ask for the warranty department. You may also take your helmet to your local dealer for evaluation. For minor cosmetic defects, the dealer may be able to help you with an assortment of spare parts or accessories. Spare parts and accessories are also available directly ScorpionExo™ on our website if your dealer does not have the ones you need.

INTRODUCTION

Congratulations for acquiring a premium ScorpionExo™ helmet. This helmet embodies the latest, state-of-the-art design, engineering and technology available in the market today and is an excellent investment for your comfort and protection.

Please remember that no helmet can protect you against all possible or foreseeable impacts even when built with the latest and best materials and technology.

The following information will help you to enjoy and properly care for your helmet.

FUNCTION

A helmet's main function is to protect your head from impact in case of an accident. To accomplish this, a helmet surrounds your head with a matrix of materials designed to absorb and cushion impact energy. A helmet is also designed to provide you with comfort while riding at speed and in various weather conditions. Yet, there is a trade-off: A helmet decreases hearing sensitivity, peripheral vision and physical movement to a certain extent while providing protection and comfort.

FIT

It is important for maximum safety that your ScorpionExo™ helmet fit snugly and comfortably on your head with the retention strap (chinstrap) properly fastened. If the helmet moves side-to-side or forward and backward without pulling the facial skin and scalp, it is too large. If the helmet is constricting or painful, it is too small.

INTERNAL SUNVISOR

The retractable sunvisor on your ScorpionExo™ helmet can help protect you from weather, small flying objects and wind. Tinted shields are designed to protect your eyes from excessive sunlight, but may hinder visibility in dark conditions.

"SpeedView™" quick-release sunvisor system allows you to lower and raise a built in tinted sunvisor. Please review the instructions within this manual.

NEVER WEAR A DARK OR TINTED FACESHIELD IN DARK OR POOR VISIBILITY RIDING CONDITIONS. This is not only unsafe, but also illegal in most states.

NEVER WEAR A SUNVISOR THAT HAS BECOME SCRATCHED, OR RIDE WITH A FACESHIELD THAT IS FOGGED BY CONDENSATION.

VENTILATION SYSTEMS

Ventilation systems are designed and engineered to maximize your comfort in a wide range of temperatures. Familiarize yourself with the vents on your street helmet. Some vents have detents allowing partial opening and closing, thereby controlling intake and exhaust airflow. Your helmet ventilation systems should be kept clear of any obstructions including dirt, insects or other items which could interfere with proper flow of air. The ventilation systems play an important role, especially during physical exertion or hot-weather riding.



SCORPION HELMETS

SCORPION EXO™

Get stung.

SCORPION SPORTS, INC.
25921 Atlantic Ocean Drive
Lago Forest, CA 92650
888.672.6774
www.scorpionusa.com

SpeedView™ approved. ScorpionExo, SpeedView, Sunvisor, KwikWick and the ScorpionExo logo are registered trademarks. Get Stung is a trademark of Scorpion Sports, Inc. ©2007 Scorpion Sports, Inc. Printed in China.



HELMET TECHNICAL MANUAL

Read before wearing your ScorpionExo Helmet.



EXO-100

SCORPION HELMETS

HELMET FEATURES

- REMOVABLE OUTER-VISOR**
Detachable visor clips to front of helmet.
- RETRACTABLE INTERNAL SPEEDVIEW™ SUN-VISOR**
Extends from and retracts into helmet interior.
- QUICK-RELEASE LOCKING-CHINSTRAP SYSTEM**
Chinstrap mechanism secures helmet with ease.
- KWIKWICK™ MOISTURE-WICKING BREATHABLE HELMET LINER AND CHEEK PADS**
Cool and dry in warm weather, warm in cool weather. Easily removable and washable.
- COMMUNICATIONS READY**
Internal Neck-liner can house left and right speakers for your hands-free communications system. (NOTE: COMMUNICATIONS DEVICE NOT INCLUDED.)
- CROWN-VENTILATION**
Intake-vent located behind visor allows a comfortable amount of airflow throughout crown of helmet for warm weather conditions.

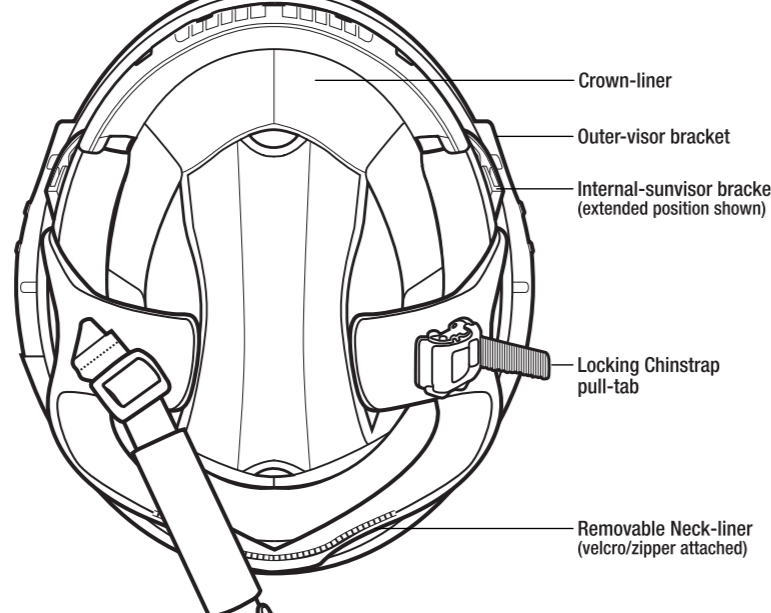
ADVANCED POLYCARBONATE ENGINEERED OPEN-FACED SHELL
Designed for comfort and ease in warm weather.

DOT CERTIFIED
Street legal in every state.

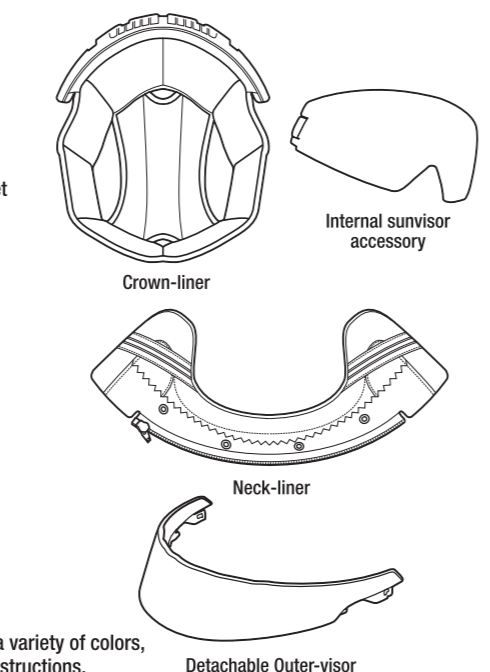
EXO-100

UNDERSIDE VIEW OF HELMET

HELMET PARTS AND ACCESSORIES

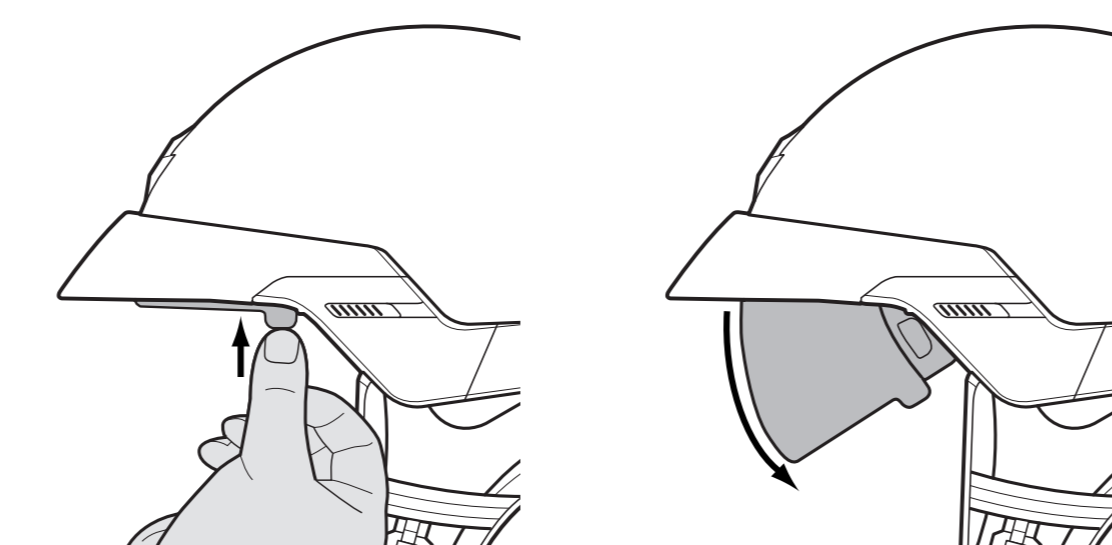


NOTE: SpeedView™ sunvisors are available in a variety of colors, and can be replaced easily by reviewing the instructions.



USING THE SPEEDVIEW™ INTERNAL SUNVISOR

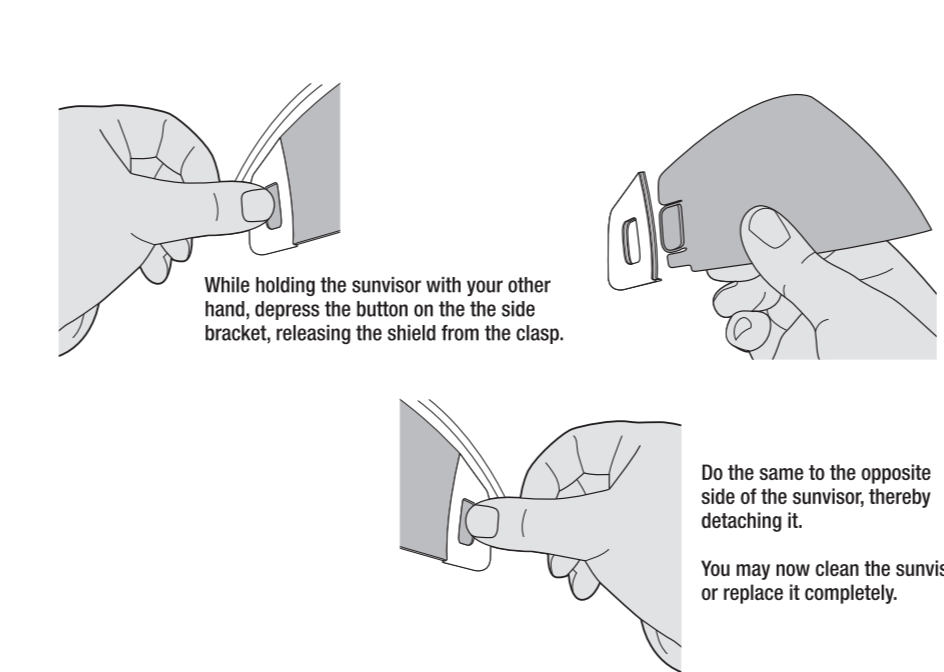
THE RETRACTABLE INTERNAL SUNVISOR CAN BE LOWERED AND RETRACTED IN ONE TOUCH.



Gently press up the internal sunvisor on the tab (located on the left-hand side of the helmet) until it clicks...

...and the internal sunvisor will extend to its fully lowered position automatically.

REMOVAL OF SPEEDVIEW™ SUNVISOR FOR CLEANING OR REPLACEMENT

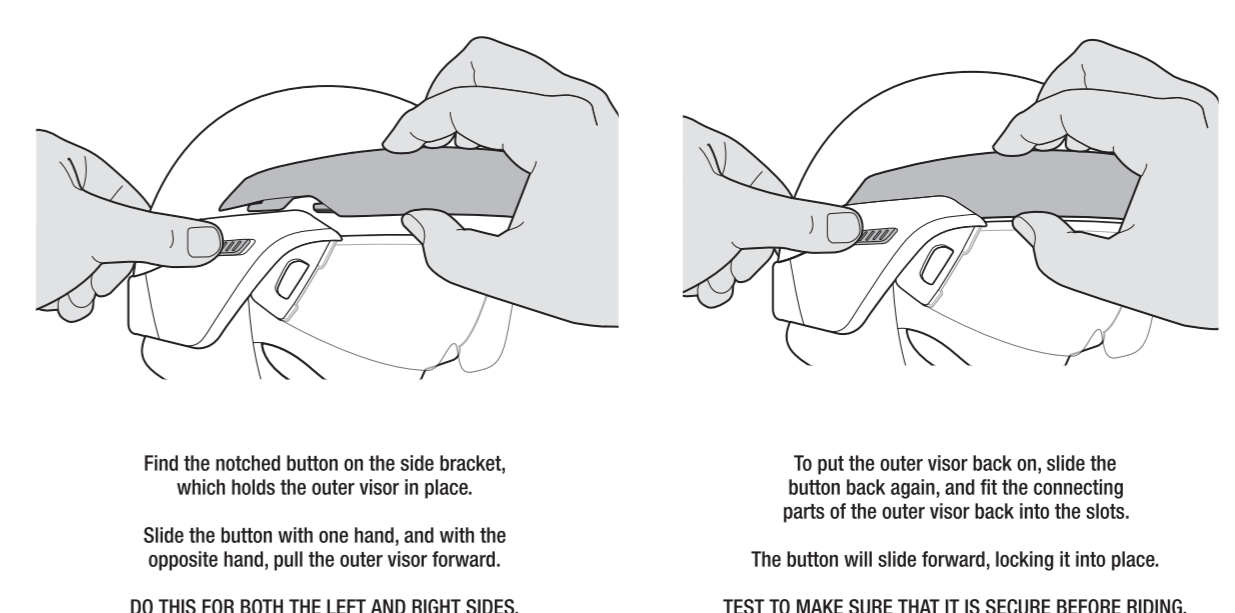


While holding the sunvisor with your other hand, depress the button on the side bracket, releasing the shield from the clasp.

Unhook the sunvisor from the clasp, and remove it from the side bracket.

Do the same to the opposite side of the sunvisor, thereby detaching it.
You may now clean the sunvisor, or replace it completely.

REMOVAL OF OUTER VISOR



Find the notched button on the side bracket, which holds the outer visor in place.

Slide the button with one hand, and with the opposite hand, pull the outer visor forward.

DO THIS FOR BOTH THE LEFT AND RIGHT SIDES.

To put the outer visor back on, slide the button back again, and fit the connecting parts of the outer visor back into the slots.

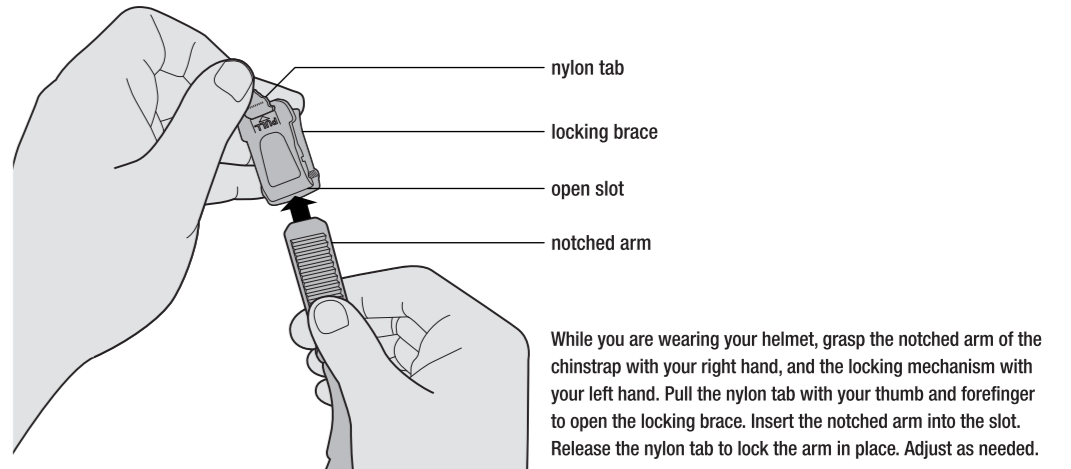
The button will slide forward, locking it into place.

TEST TO MAKE SURE THAT IT IS SECURE BEFORE RIDING.

SECURING AND WEARING YOUR HELMET

Your ScorpionExo™ helmet should be worn as follows: Using both hands, grab the helmet's chinstraps with your thumbs and forefingers, then "roll" the helmet onto your head starting at the forehead. Continue rolling the helmet on toward the back of the head until it comes to rest with your head fully in contact with the inner linings.

HOW TO USE CHINSTRAP



nylon tab

locking brace

open slot

notched arm

While you are wearing your helmet, grasp the notched arm of the chinstrap with your right hand, and the locking mechanism with your left hand. Pull the nylon tab with your thumb and forefinger to open the locking brace. Insert the notched arm into the slot. Release the nylon tab to lock the arm in place. Adjust as needed.

FIRMLY AND SECURELY FASTEN YOUR CHINSTRAP.
Check your chinstrap for tightness occasionally as vibration or wind may loosen it.

SCORPION HELMETS

